

Mount Nittany Conservancy/ Lion's Paw Alumni Association Holdings and Adjacent Properties

R



May 10, 2007

The Mount Nittany Conservancy was incorporated as a non-profit organization in 1980 by the Lion's Paw Alumni Association to protect the lands of Mount Nittany. At present the Conservancy manages 767 acres of land, including 434 acres of land owned by Lion's Paw Alumni Association.

The Mount Nittany Conservancy
Office of the Volunteer Coordinator
2555 North Atherton Street
State College, PA 16803

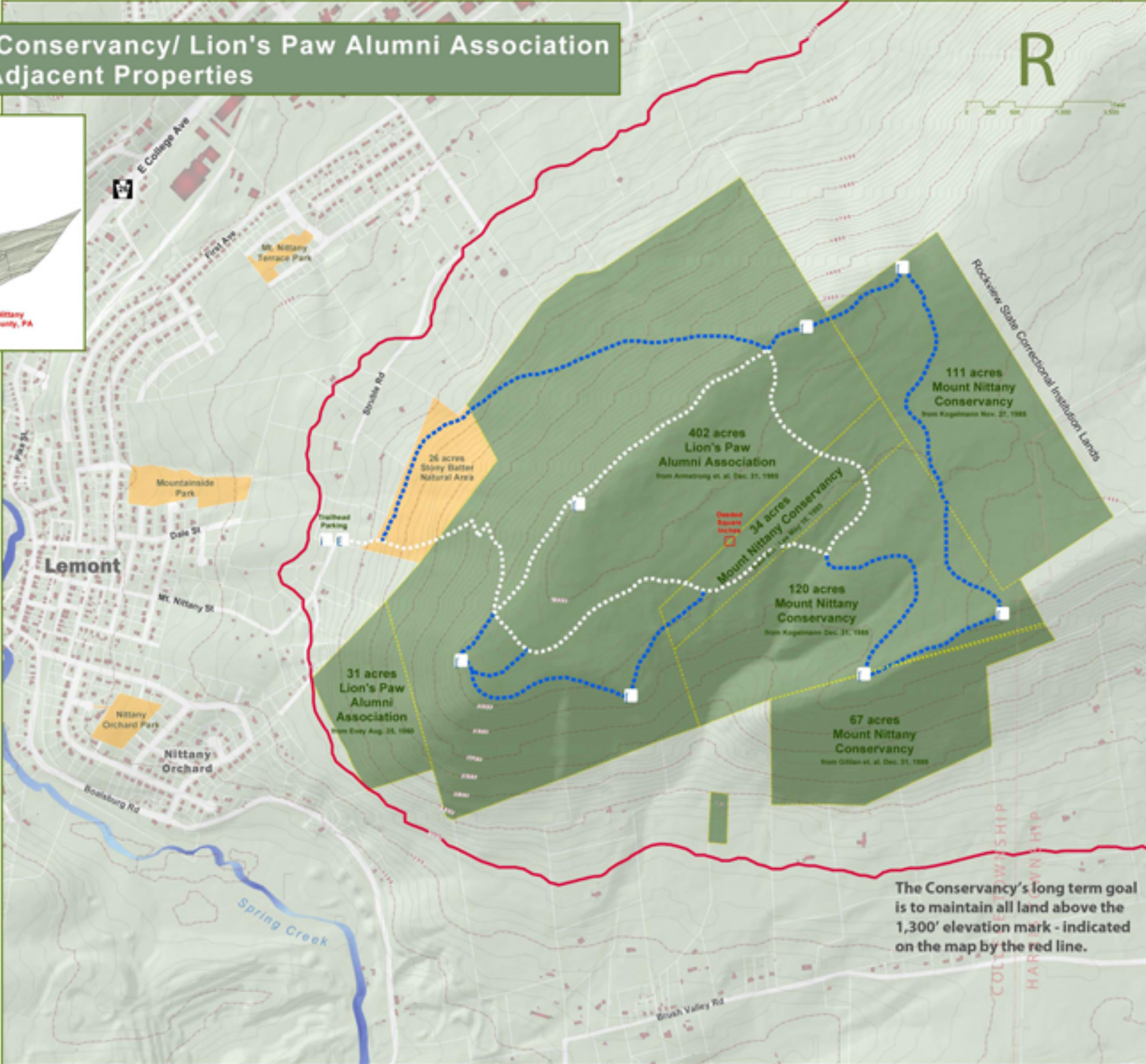
On the web at: www.MtNittany.org

- Hiking Trails of Mount Nittany**
- Blue Blazed Trail
 - ○ ○ ○ White Blazed Trail
 - Scenic Views
- Building Footprints
 - 100' Contours
 - Mount Nittany Conservancy & Lion's Paw Alumni Association Property
 - College Township Parks
 - Stream
 - Parcels

Centre Regional Planning Agency
2001 Atherton Street, State College, PA 16803
Phone: 814.337.1234

Centre Regional Parks & Recreation
2001 Atherton Street, State College, PA 16803
Phone: 814.337.1234

© 2007 Mount Nittany Conservancy
All rights reserved. This map and its contents are the property of the Mount Nittany Conservancy.



26 acres
Stony Blatter
Natural Area

402 acres
Lion's Paw
Alumni Association
from Armstrong et al. Dec. 31, 1959

34 acres
Mount Nittany Conservancy
from May 15, 1988

120 acres
Mount Nittany
Conservancy
from Kogelmann Dec. 31, 1959

111 acres
Mount Nittany
Conservancy
from Kogelmann Nov. 27, 1955

31 acres
Lion's Paw
Alumni
Association
from Evey Aug. 25, 1960

67 acres
Mount Nittany
Conservancy
from Gilson et al. Dec. 31, 1959

The Conservancy's long term goal is to maintain all land above the 1,300' elevation mark - indicated on the map by the red line.